

Un centro integral de investigación del cáncer en Red



**INSTITUTO DE BIOLOGÍA MOLECULAR Y CELULAR DEL
CÁNCER - CENTRO DE INVESTIGACIÓN DEL CÁNCER
IBMCC-CIC (CSIC – USAL)
Salamanca (Spain)**



IBMCC-CIC MISSION AND VISION

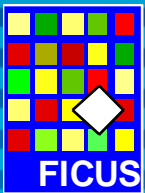
The IBMCC-CIC is a joint enterprise between the Spanish Council for Scientific Research (CSIC) and the University of Salamanca. It is also a recognised Health Centre from the Castilla-León Health System



IBMCC: Instituto de Biología Molecular y Celular del Cáncer

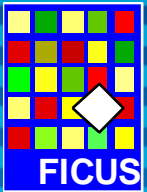


Centro Sociosanitario de Castilla y León



www.cicancer.org

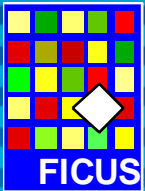




CARACTERÍSTICAS DEL CIC

INVESTIGACIÓN de EXCELENCIA

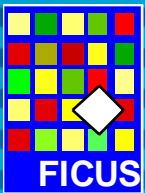




CARACTERÍSTICAS DEL CIC

INVESTIGACIÓN PUNTERA basada en los comprehensive cancer centers

Un CCC es un modelo restrictivo, hay **menos de cuarenta reconocidos en EEUU**, y su requisito fundamental es que debe desarrollar investigación puntera -evaluada externamente- de tres tipos: básica, clínica y aplicada. Ha demostrado ser el más eficiente a la hora de obtener los **mejores resultados prácticos en investigación oncológica**.



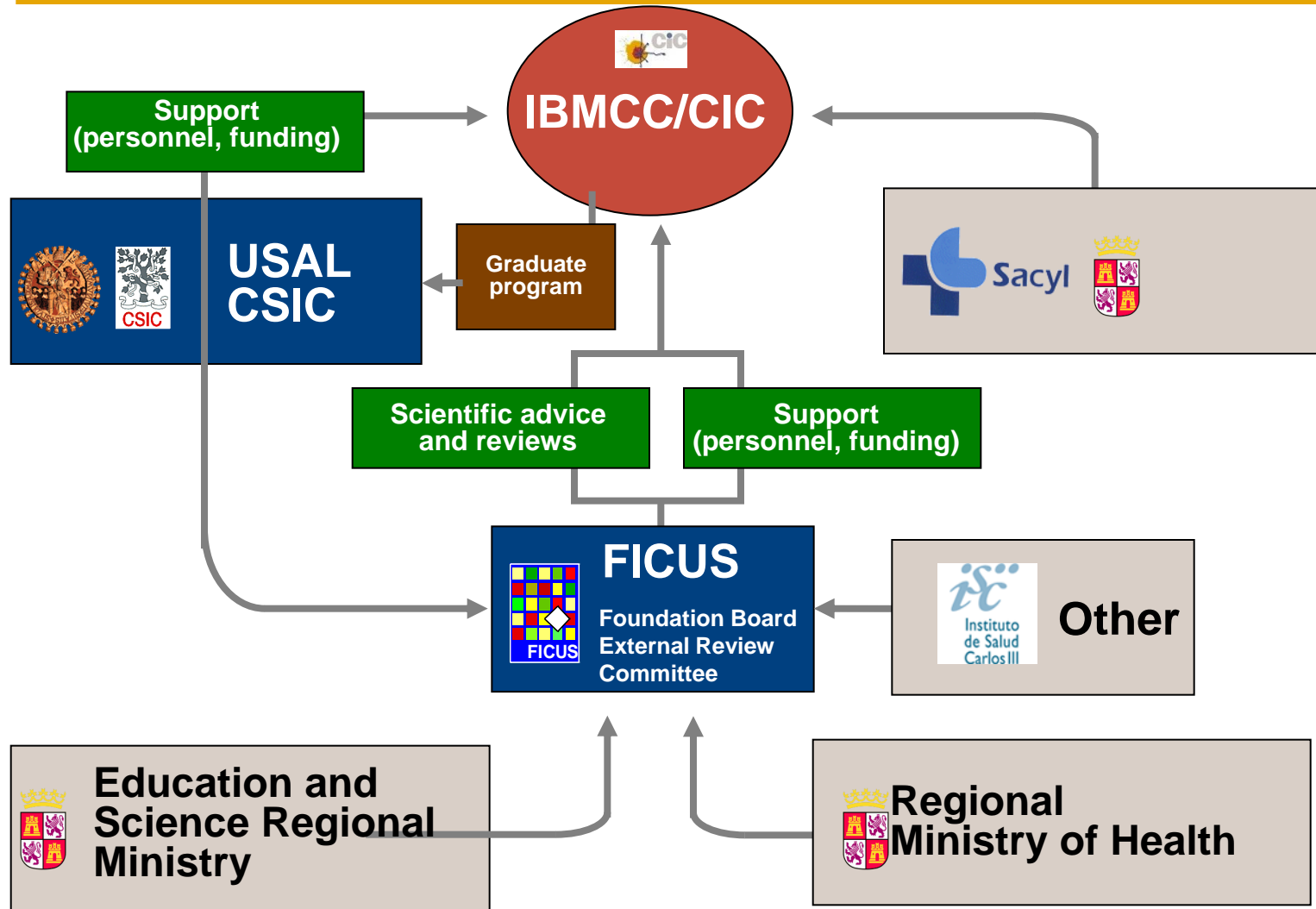
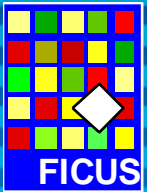
The IBMCC-CIC intends to follow the model of the USA Comprehensive Cancer Centers

GOALS:

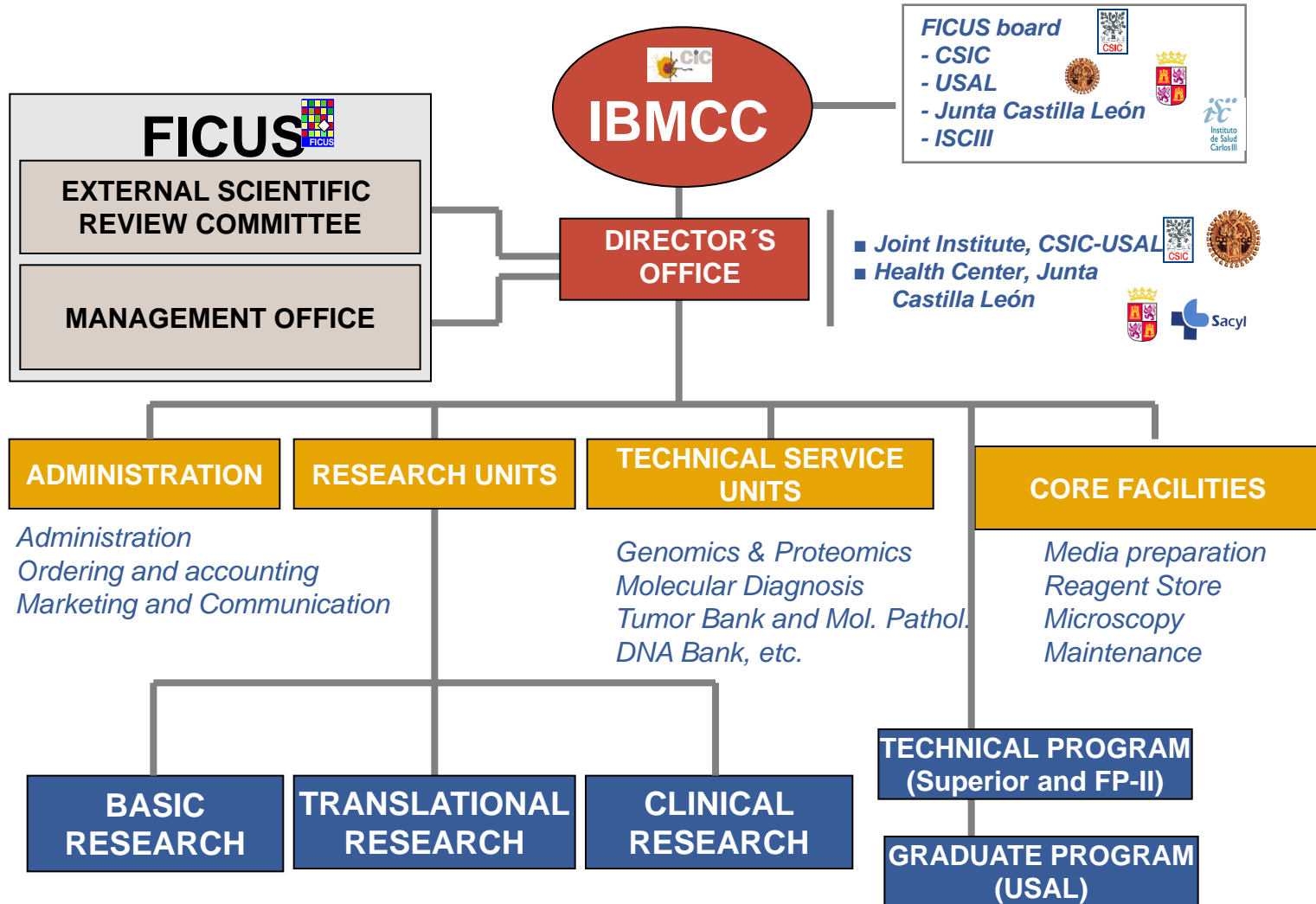
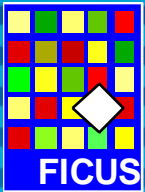
- ✓ To create an **environment of research excellence** that could compete in equal terms with other national and international cancer centres.
- ✓ To promote a **synergistic cooperation** among basic, clinical, and translational laboratories.
- ✓ To conduct a **multifaceted study of the tumorigenic process** at the basic, translational, and clinical level.
- ✓ To develop **new diagnostic and prognostic tools** of application to cancer patients.
- ✓ To put in motion **technical and diagnostic facilities** that favour cancer diagnostics, prognostics and the development of new anti-tumoral therapies and treatments.
- ✓ To promote **interactions with other national and international cancer centres** as well as with the biopharmaceutical industry.
- ✓ To **train specialized personnel** at the technical, graduate, and postdoctoral level in molecular, translational, and clinical oncology.



ORGANIZATION: MANAGEMENT

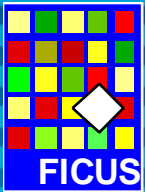


ORGANIZATIONAL CHART

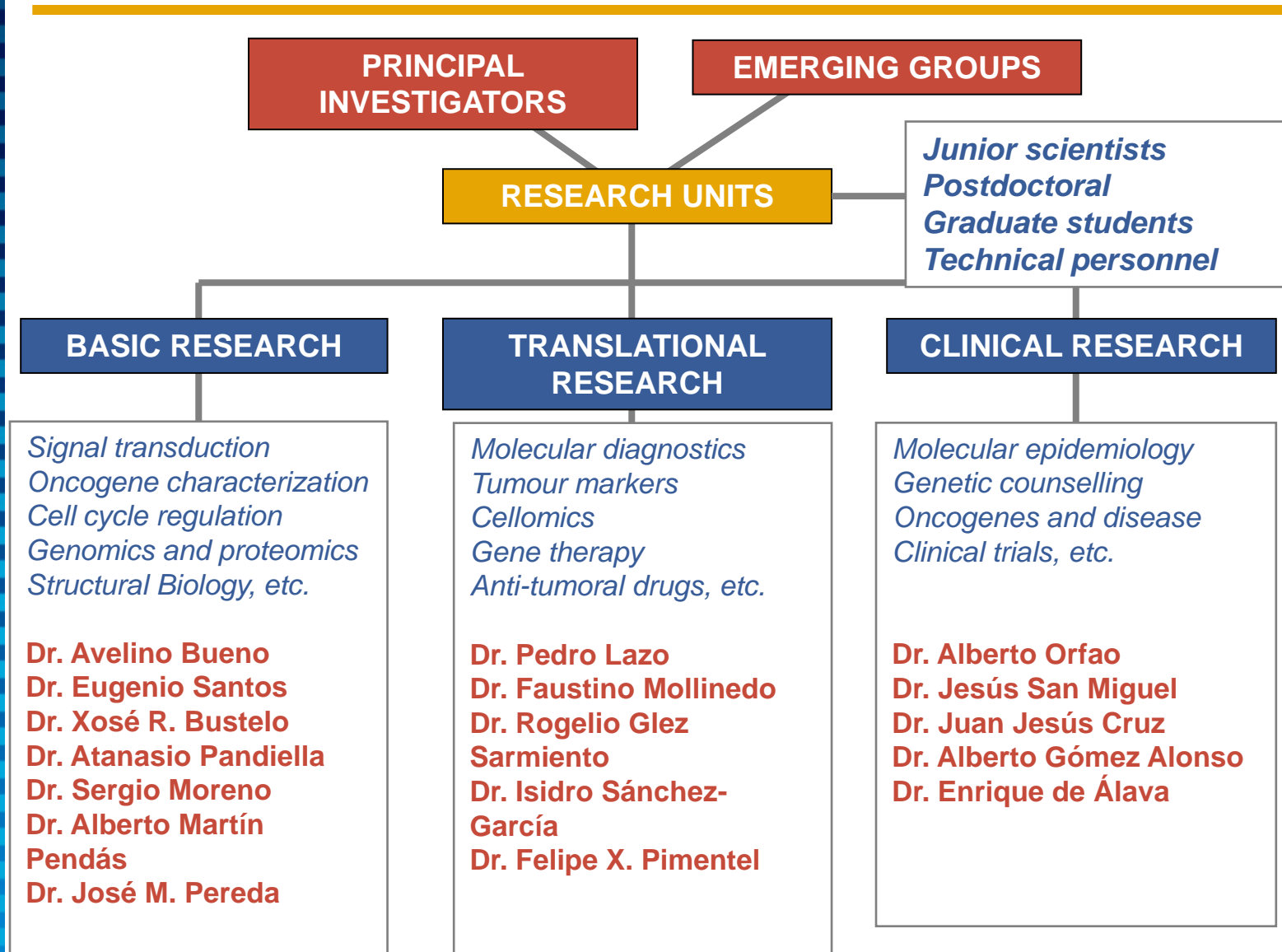


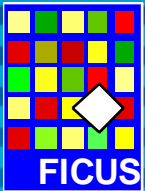
cic





ORGANIZATION OF RESEARCH UNITS



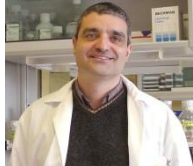


BASIC RESEARCH TEAMS



Avelino Bueno

Cell cycle analysis. Control of mitosis and checkpoint response in eukaryotic cells



Xosé Bustelo

Small GTPases and cancer . Rho/Rac mediated signaling



Sergio Moreno

*Cell cycle analysis. Cell division and cell differentiation.
Oncopharmacology. Drug target discovery*



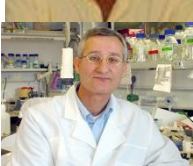
Atanasio Pandiella

*Kinases in oncology. Signalling by receptor tyrosine kinases
Oncopharmacology. Novel drugs in haematological malignancies*



Alberto M. Pendás

Animal models in cancer. Chromosome instability and cancer



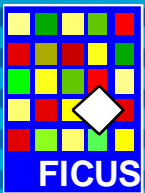
Eugenio Santos

Small GTPases and cancer . Ras mediated signalling



José María Pereda

Structural biology



TRASLATIONAL RESEARCH TEAMS



Rogelio Glez. Sarmiento

Clinical and molecular analysis of solid tumors and hereditary cancer



Pedro A. Lazo

Kinases in oncology. Signalling by serine-threonine kinases

Oncopharmacology. Ser-Thr kinase targets in oncology



Faustino Mollinedo

Cell death and cancer. Lipid rafts and death receptors

Oncopharmacology. Drug discovery and mechanisms of action



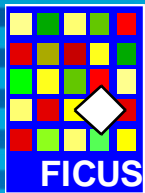
Isidro Sánchez García

Cancer stem cells and cell therapy



Felipe X. Pimentel

Cell death and cancer. Atypical cell death pathways



CLINICAL RESEARCH TEAMS



Juan Jesús Cruz

*Clinical and molecular analysis of solid tumors and hereditary cancer.
Clinical Oncology*



Enrique de Álava

Molecular Pathology . Tumor Bank



Alberto Gómez Alonso

*Clinical and molecular analysis of solid tumors and hereditary cancer.
Surgery*



Alberto Orfao

Immunology and cancer. Molecular Diagnostic & Citometry

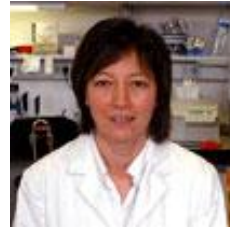
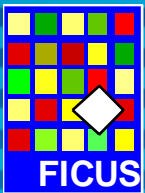


Jesús San Miguel

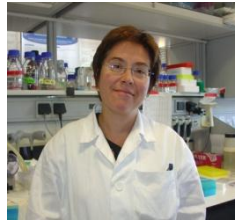
Oncohematology.

Oncopharmacology. Novel drugs in haematological malignancies

CIC EMERGENT RESEARCHERS (ISCIIII-Miguel Servet Researchers)



Azucena Esparís Ogando
Novel targets in breast cancer.



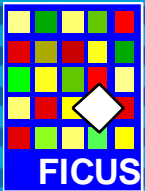
Mercedes Garayoa Berrueta
Bone marrow microenvironment and bone lesions in multiple myeloma



Andres García Montero
Proteomic characterisation of chronic lymphoproliferative T and NK syndromes.

CIC EMERGENT RESEARCHERS

(Ramón y Cajal Program, PCD)



Julia Almeida

Phenotypic, molecular and functional characterization of the tumor hematological TNK mature cells.



Mercedes Dosi

Control of ribosomal biogenesis. Coupling between ribosomal biogenesis and signalling / oncogenic pathways.



Maria Sacristan

Regulatory mechanisms in mitotic exit in human cells.

Alberto Fdez Medarde

Analysis of the functional specificity of guanine nucleotide exchangers for Ras, Grf1 and Grf2.



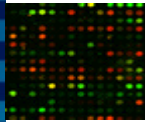
Carmen Guerrero

Study of the functional role of C3G in signal transduction and its possible implication in chronic myeloid leukaemia.

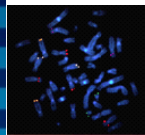




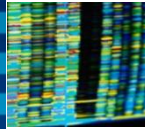
SOCIO-SANITARY SERVICE UNITS



Genomics and Proteomics Unit, Bioinformatics
Directors: Drs. X. R. Bustelo J. De Las Rivas



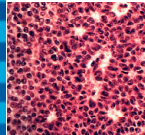
Molecular, Cellular, and Cytogenetic Services
Director: Drs. J. San Miguel and A. Orfao



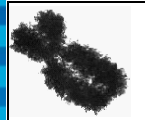
Early Diagnosis Program and Genetic Counseling
Director: Drs. R. Sarmiento and J.J. Cruz



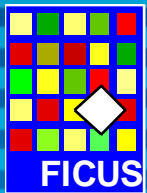
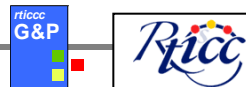
Traslational Oncopharmacology
Director: Dr. Atanasio Pandiella



Tumour Bank and Molecular Pathology Units
Director: Dr. E. de Álava



National DNA Bank
Director: Drs. A. Orfao and E. de Álava



Graduate Program, CME, Scientific diffusion, Information to patients, advocacy E.Santos

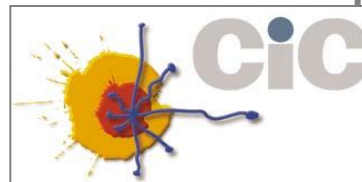




RESEARCH LINES: SCIENTIFIC NETWORKING ESTABLISHED

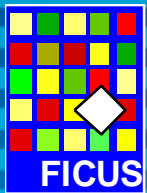


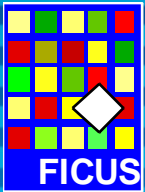
NATIONAL COORDINATION



Genoma España

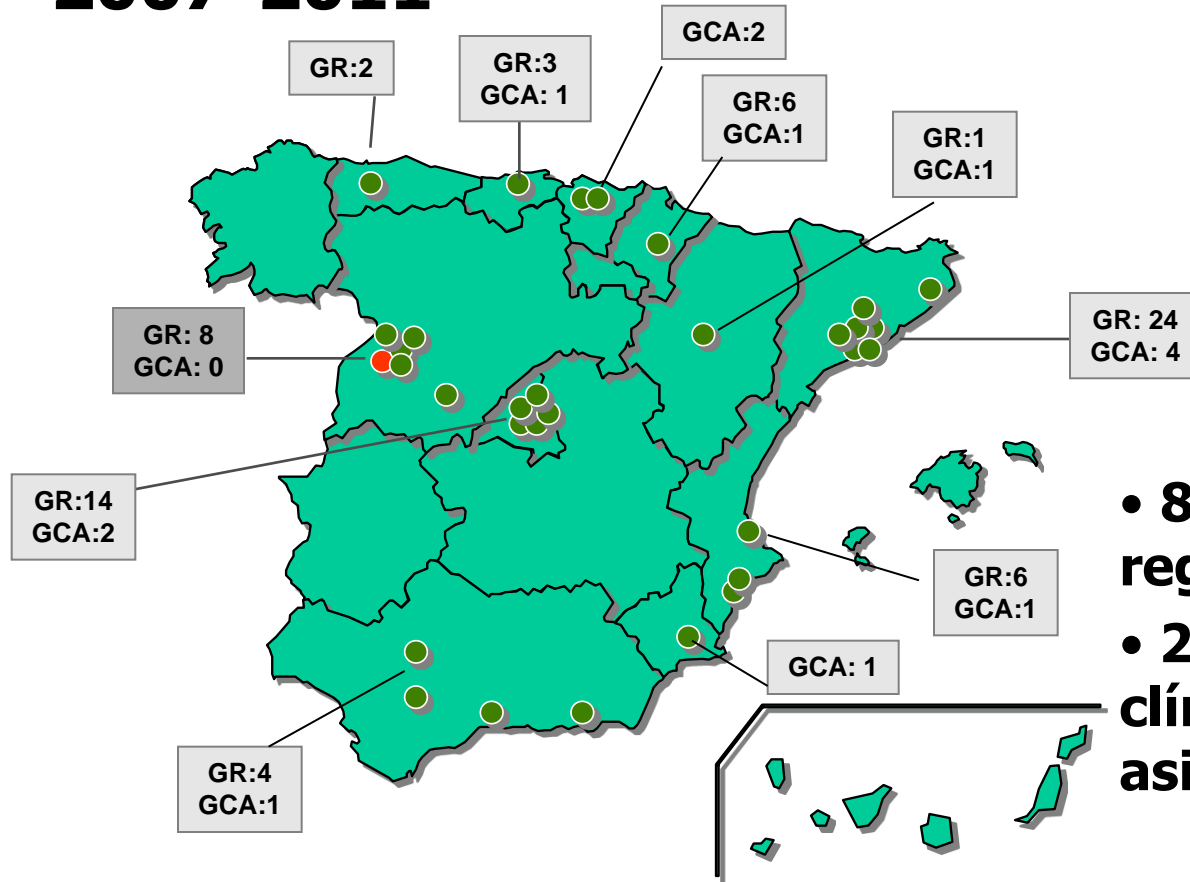
- TUMOR BANK
- GENOM&PROT
- NEW THERAPIES
- TUMOR REGISTRY
- MOL. DIAGNOSTICS
- ANIMAL MODELS
- BIOINFORMATICS
- EDUCATION & TRAINING





RED TEMÁTICA DE INVESTIGACION COOPERATIVA EN CANCER (RTICC)

2007-2011



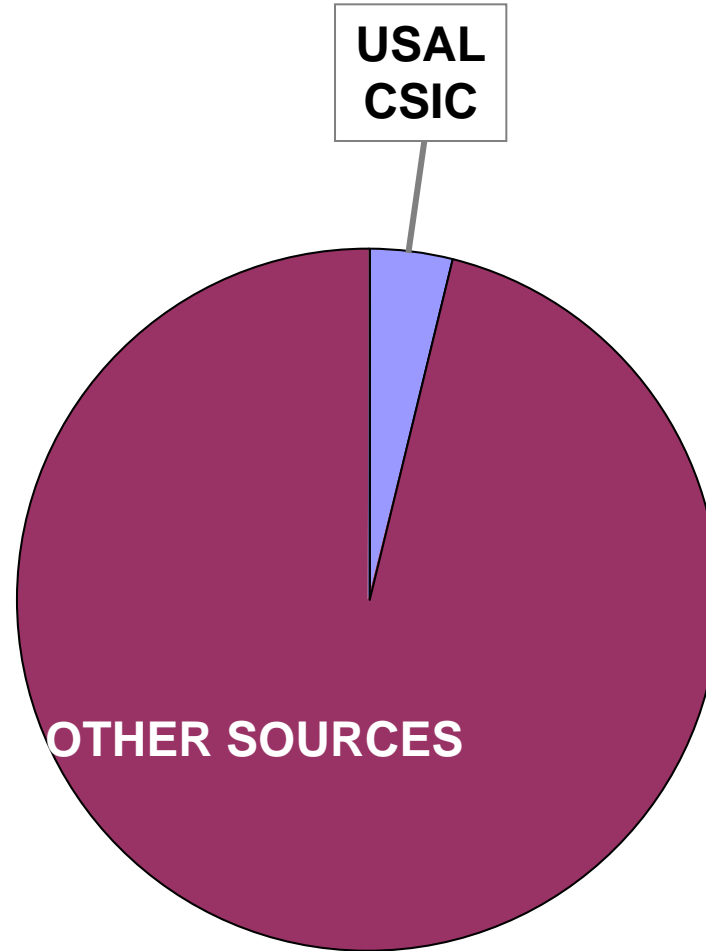
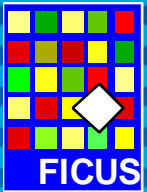
- 82 Grupos regulares
- 21 Grupos clínicos asistenciales

- 4 Líneas verticales
- 6 Programas horizontales
- 13 CC.AA.
- - 5 M € / año

Coordinada desde el CIC de Salamanca



Financiación

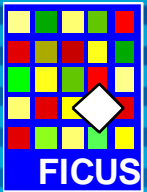
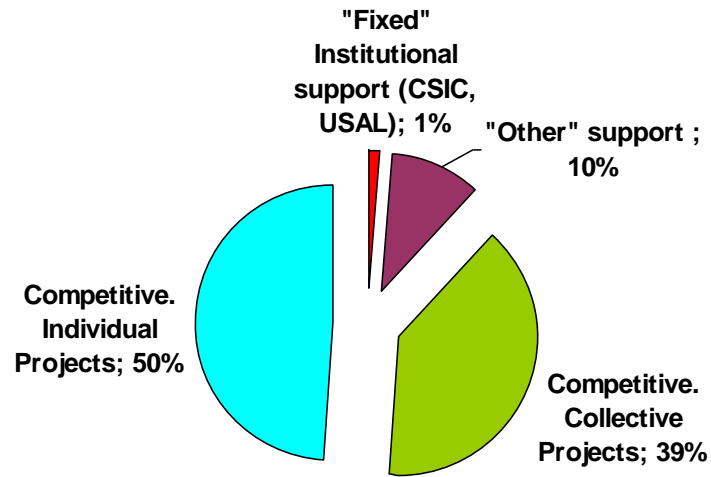




Financiación



FUNDING, IBMCC - 1999/2004





Financiación



Financiación

Nacional: MICINN, ISCIII

Regional: CYL

Nacional privada: AECC, Ramón Areces, otras.

Europea: Programa Marco

USA: privada (MMRF, IMF), NIH

Industria: Nacional e Internacional

